


Notes :

APPROVED PRODUCT



RHI Emissions Compliant

Rev	Date	Amendment	Drawn	Checked



Unit D, Cahir Business Park, Cahir, Co. Tipperary, Ireland.
t. +353 52-7468072 f. +353 52 7445330
Booths Hall, Chelford Rd., Knutsford, WA15 8GS, UK.
T / F. 0161 2617497
E. info@woodenergysolutions.com
www.woodenergysolutions.com

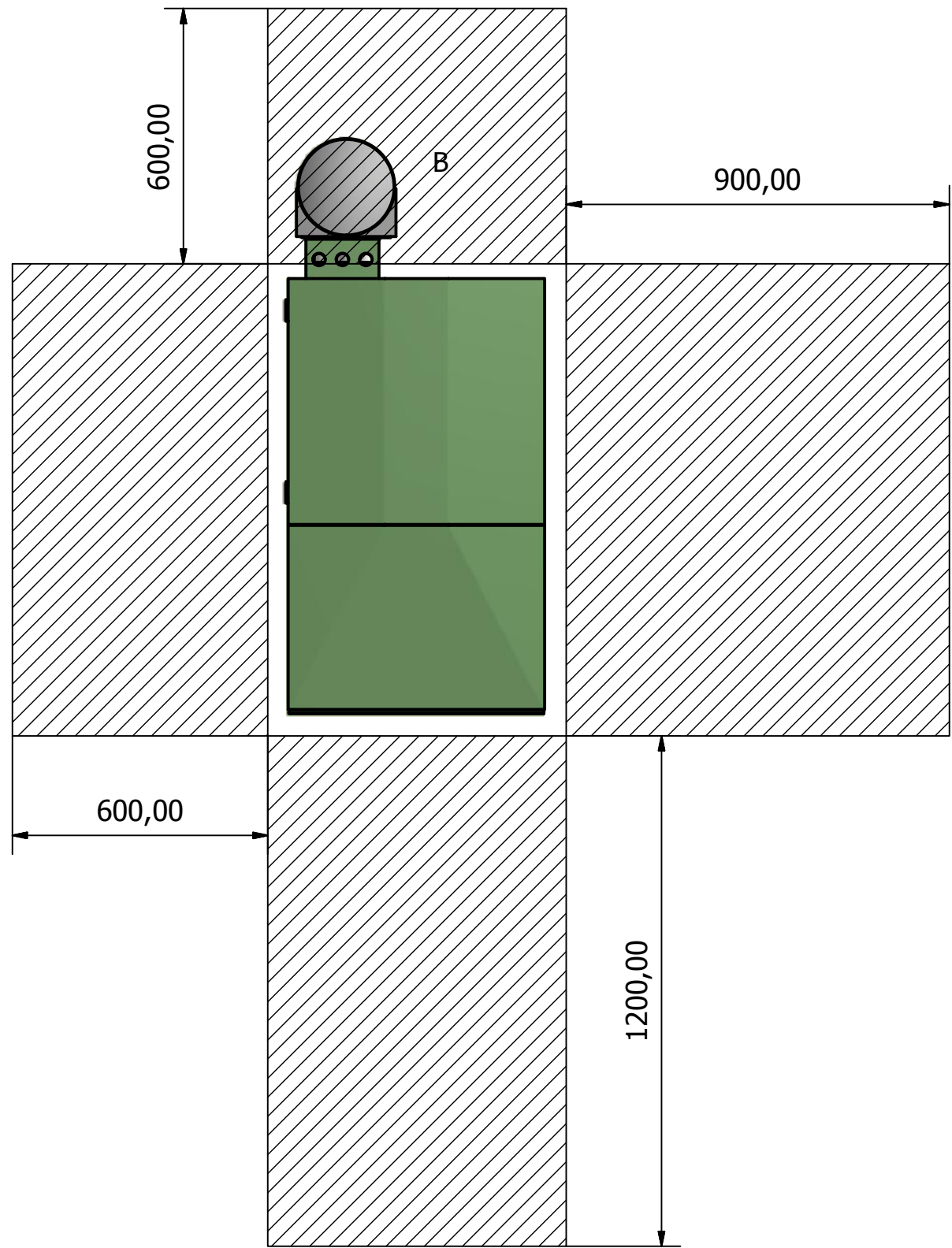
Drawing			
E-Compact 28 Outdoor Specification Sheet			
Designed By GPNC	Checked By AC		
Status Manufacturing	Date 23/01/2015		
Drawing Number EC28 INFO 003			

Project No. 2014/03	Scale NTS	Revision	Sheet 1 / 2
------------------------	--------------	----------	----------------

Strictly no un-authorized reproduction, distribution or editing of these drawings without the permission of the Licensor. All drawings are copyright protected. ©

Boiler Model		E-Compact 28
Energy	Nominal (Max) Rated Output - kW	27.7
	Reduced Rated Output (30%) - Kw	8
	Boiler Class	3
	Efficiency at Nominal Output - %	90.2
	Test Standard	EN303-5:1999
Water	Water Capacity - litres	18
	Waterside Resistance - mbar	51
	System design flow rate at 10°C Δt rise @ 80° - l/s	2.4
	System design flow rate at 20°C Δt rise @ 80° - l/s	1.2
	Operating Temperature Range - °C	60-85
	Recommended Return Temperature	60
	Maximum Operating Pressure - bar	3
Flue Gas	Flue Gas Temperature at Maximum Rated Output	150
	Flue Gas Temperature at Reduced Rated Output	90
	Flue Gas Mass Flow - g/s	7.6 - 158
	Flue Outlet Diameter - mm	80
	Recommended Flue Diameter - mm	100
	Flue Draft Required at Reduced / Nominal Output - Pa	10/25
Fuel	Fuel	6mm Wood Pellets
	Fuel Standard	EnPlus - A1
Connections	Water Flow Connection - inch	3/4" (DN 20)
	Water Return Connection - inch	3/4" (DN 20)
	Water Drain Connection - inch	1/2" (DN 15)
	Safety Valve / Air Vent Connection - inch	1/2" (DN 15)
Electrical	Electrical Supply	230V 50Hz 0.6A
	Current at Start-Up - Amp	2.5A
	Auxilliary Power at Reduced / Nominal - Watts	42 - 95 W
	Standby Power - Watts	6.7W
Total Dry Weight - kg		205kg

Minimum Recommended Service Clearance



Notes :



RHI Emissions Compliant

Rev	Date	Amendment	Drawn	Checked



Unit D, Cahir Business Park, Cahir, Co. Tipperary, Ireland.
t. +353 52-7468072 f. +353 52 7445330
Booths Hall, Chelford Rd., Knutsford, WA15 8GS, UK.
T / F. 0161 2617497
E. info@woodenergysolutions.com
www.woodenergysolutions.com

Drawing			
E-Compact 28 Outdoor Specification Sheet			
Designed By	GPNC	Checked By	AC
Status	Manufacturing	Date	23/01/2015
Drawing Number			
EC28 INFO 004			
Project No.	Scale	Revision	Sheet
2014/03	NTS		2 / 2